

Cone Health Heart & Vascular Care EXPANSION



Enhanced Treatment Capabilities and Accelerated Innovation

- New and expanded treatment areas with the latest technology for leading-edge care
- Redesigned research space with more clinical trials for more patients in more locations

Expanded Prevention and Wellness Services

- Advanced imaging for early heart disease detection and prevention
- New rehab facilities with medical fitness, nutrition counseling and a demonstration kitchen

Greater Convenience

- One stop for comprehensive care, including appointments with cardiologists, heart, vascular and chest surgeons, nurses, nutritionists, imaging experts, pharmacists, wellness counselors, social services and transportation assistants
- Dedicated heart and vascular parking directly connected to facilities

New Heart & Vascular Facilities

New Heart & Vascular Center at Alamance Regional Medical Center

- 14,000 Sq. Ft. Added
- 49,000 Sq. Ft. Renovated
- June 21, 2022 Groundbreaking
- Winter 2024 Target Completion

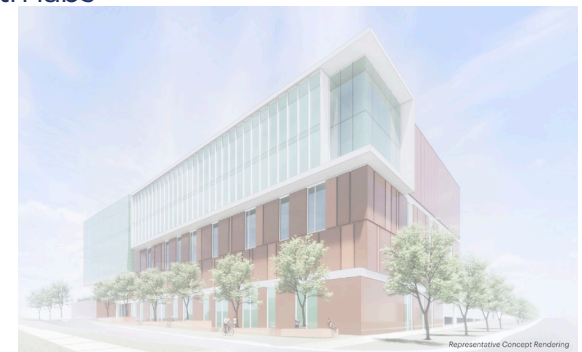


Key Enhancements:

- New cardiovascular cath lab with new technology for advanced treatments
- Expansion and modernization of two existing cardiovascular cath labs
- Enlargement and upgrade of pre- and post-procedure spaces
- New CT scanner with specialized cardiac imaging capabilities
- Larger heart rhythm and imaging departments

New Cone Health Heart & Vascular Outpatient Tower

- on the Moses Cone Hospital campus
- 156,000 Sq. Ft. Added
- Dec. 2022 Groundbreaking
- Winter 2025 Target Completion



Key Enhancements:

- New and enhanced care coordination for improved patient experience
- Expanded, more convenient imaging capabilities
- New heart and vascular procedures lab
- One location for heart, vascular and thoracic diagnosis, treatment and follow-up care

Expanded Heart & Vascular Center at Moses Cone Hospital

- 37,000 Sq. Ft. Added and Renovated
- Oct. 2022 Start Date
- Spring 2024 Target Completion

Key Enhancements:

- Redesigned heart failure, electrophysiology and research/clinical trial care areas
- 2 new cardiovascular cath labs to enable more complex procedures, resulting in 9 cath labs at Moses Cone Hospital
- Enlargement and modernization of pre- and post-procedure spaces

New Cardiopulmonary Rehabilitation Center

– adjacent to Moses Cone Hospital

- 10,400 Sq. Ft. Added
- Winter 2022/2023 Target Completion Date

Key Enhancements:

- New demonstration kitchen
- New fitness areas, gym tracks and meditation/tranquility space
- Connection to Latham Park and the Latham Park Greenway
- Easier access for patients than current rehab site at Moses Cone Hospital

New 775-Space Parking Deck and Street Safety Improvements

– for new heart & vascular outpatient tower on the Moses Cone Hospital campus

Overall

- 266,400 Sq. Ft.
- Securing the highest quality, nationally-leading heart and vascular care for the communities we serve for decades to come.

Learn more at conehealth.com/heart.

Community support accelerates heart care innovation at Cone Health. Learn how your gift can make a difference at conehealthphilanthropy.org.

